

11 Harrison, 2nd Floor

TRIBECA | Commercial Loft Showroom or Office Space



PROPERTY OVERVIEW

DETAILS:

1,700 RSF For Lease

LOCATION:

South side of Harrison between Greenwich and Hudson Streets

RENT:

Please inquire

CONDITION:

Excellent, turn key commercial space

TERMS:

Flexible

POSSESSION:

Immediate

APPROVED USES:

Showroom or office



FOR MORE INFORMATION:

Demetri Ganiaris

GANIARIS REALTY GROUP

+1 (917) 658 2563 | dganiaris@ganiarisrealty.com

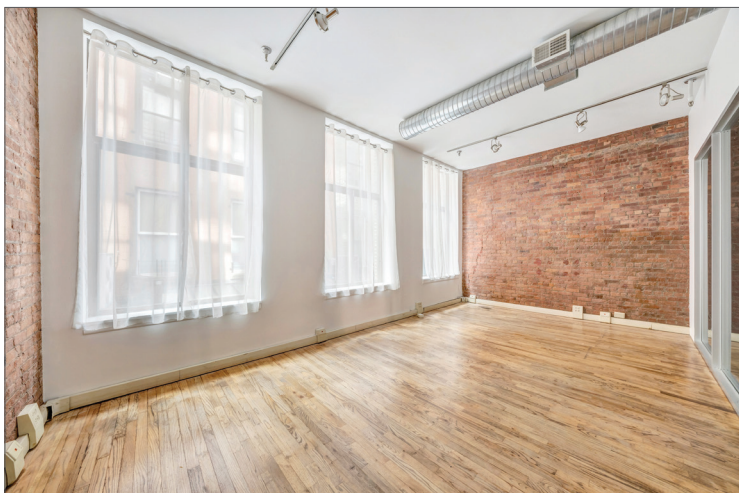
All information is from sources deemed reliable. No representation is made as to the accuracy thereof, and such information is subject to errors, omission, changes or withdrawal without notice. All square footage and dimensions are approximate.



GANIARIS
REALTY GROUP

11 Harrison, 2nd Floor

TRIBECA | Commercial Loft Showroom or Office Space



DESCRIPTION

This is a turnkey, full-floor commercial loft on the second floor of a building in the historical district of Tribeca. The space has been renovated and has direct keyed elevator access to/from a beautifully finished lobby on the first floor.

The loft has a large front room with three large windows and features an exposed brick wall on one side. It could comfortably fit 15 desks. The rear of the space has a large open lounge area, a spacious private conference room, a kitchenette equipped with a dishwasher, microwave, and fridge, and two private bathrooms. The loft is serviced by central AC and heat systems. The building and space are ADA compliant.

FOR MORE INFORMATION:

Demetri Ganiaris

GANIARIS REALTY GROUP

+1 (917) 658 2563 | dganiaris@ganiarisrealty.com

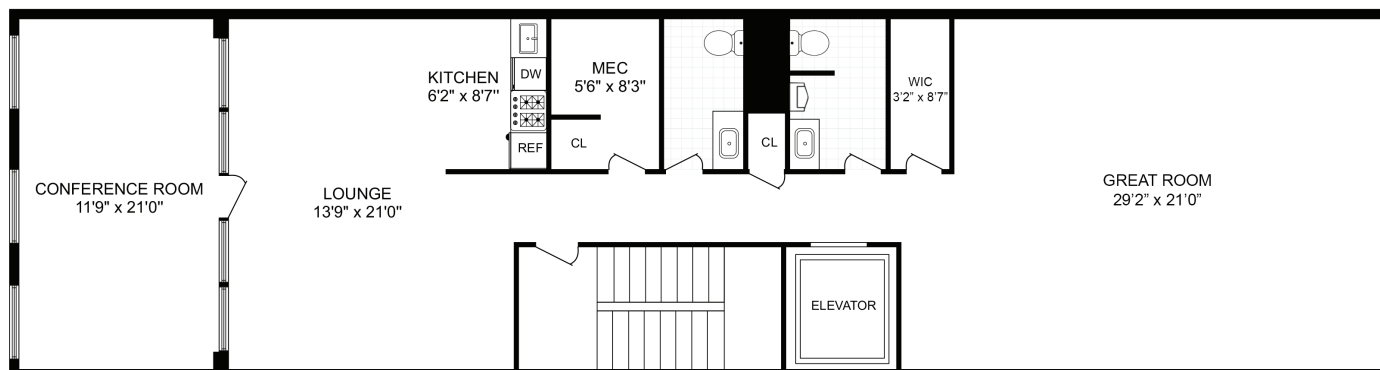
All information is from sources deemed reliable. No representation is made as to the accuracy thereof, and such information is subject to errors, omission, changes or withdrawal without notice. All square footage and dimensions are approximate.



GANIARIS
REALTY GROUP

11 Harrison, 2nd Floor

TRIBECA | Commercial Loft Showroom or Office Space



LOCATION

11 Harrison Street is situated on a cobblestone street in the heart of historic Tribeca, one building away from the photogenic Staple Street, which has been featured in tv, film, and ads. The space has great exposure with easy access to public transportation and the Holland Tunnel.

Tribeca is turning back to its roots of being a destination for makers and designers. Neighbors on Harrison include: Jenni Kayne, Alton Lane, and Lola Jewelry, as well as Puffy's Tavern, Terroir Tribeca, and Jungsik's featuring New Korean cuisine. Within two blocks are Nili Lotan, Cynthia Rowley, The Westside, The Armoury, TRNK NYC, and Joseph Carini Carpets. All of this in a neighborhood filled with fantastic food and drink options, including American Cut, Locande Verde, The Odeon, Bubby's, Frenchette, Grand Daisy Bakery, Laughing Man, Van Leeuwen Ice Cream, and many more.

FOR MORE INFORMATION:

Demetri Ganiaris

GANIARIS REALTY GROUP

+1 (917) 658 2563 | dganiaris@ganiarisrealty.com



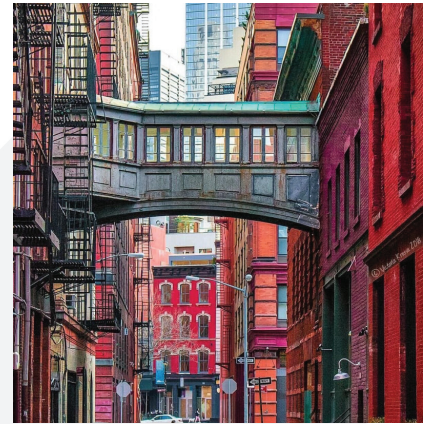
GANIARIS
REALTY GROUP

All information is from sources deemed reliable. No representation is made as to the accuracy thereof, and such information is subject to errors, omission, changes or withdrawal without notice. All square footage and dimensions are approximate.

11 Harrison, 2nd Floor

TRIBECA | Commercial Loft Showroom or Office Space

AREA NEIGHBORS



FOR MORE INFORMATION:

Demetri Ganiaris
GANIARIS REALTY GROUP
+1 (917) 658 2563 | dganiaris@ganiarisrealty.com

All information is from sources deemed reliable. No representation is made as to the accuracy thereof, and such information is subject to errors, omission, changes or withdrawal without notice. All square footage and dimensions are approximate.



GANIARIS
REALTY GROUP